



INTERNATIONAL REAL ESTATE LOGISTICS SOLUTIONS

**YOUR GATEWAY  
TO LOGISTICS PROPERTY**

**TOP OFFERS  
ACROSS EUROPE**



**Carter Jonas**





INTERNATIONAL REAL ESTATE LOGISTICS SOLUTIONS

## INTERNATIONAL REAL ESTATE LOGISTICS SOLUTIONS

**IRELS is the only international network of independent professionals specialising in the logistics real estate sector in Europe. The best assets of our network: the human factor, short decision-making circuits, case follow-up by the same person and the mobility of our teams, providing quality, flexibility and a quick response time.**

We serve our clients with 1,070 experts in 42 offices through the network, covering 5,500 buildings available. Our members concluded deals of 13 millions sqm in the last 10 years. Based on these, our Single Points of Contact (SPOC) provide tailor-made real estate logistics solutions in :

- **Strategic consulting,**
- **Finding logistics buildings available for sale or rent, and**
- **Project Management.**

Our ambition with this network is to support our clients with their international development.

This network solely consists of independent companies and leaders in their respective countries coming together for a common project: to offer tailor-made real estate solutions based on local expertise and benefiting from an optimal knowledge of the market and its evolution.

Our values :

**F - FLEXIBILITY**

**A - ANTICIPATION, AGILITY**

**S - SPEED & SHORT DECISION PROCESS**

**T - TRANSPARENCY**

We aim to be the standard in terms of quality and responsiveness in the logistics real estate market, at the European level first and foremost.



# TOP OFFERS

## AUSTRIA



# TOP OFFERS AUSTRIA

01



## CITY PARK VIENNA

- Location: Vienna South
- Area: From 1,500 sqm
- Availability: Q4 2024

02



## SQUAREBIZZ PARK

- Location: Grossebersdorf / Vienna North
- Area: Up to 10 sqm
- Availability: Immediate

03



## LOGISTIC PARK VIENNA SOUTHEAST

- Location: Kottingbrunn
- Area: Up to 35,000 sqm
- Availability: Q2 2024

04



## BUSINESSPARK LEBRING

- Location: Graz / Lebring
- Area: From 2,500 sqm
- Availability: Q3 2025

05



## LOGISTIC CENTER VILLACH

- Location: Villach / Fürnitz
- Area: Up to 32,000 sqm
- Availability: Q3 2025

06



## TIROL CENTER KEMATZEN

- Location: Kematzen in Tirol
- Area: 64,000 sqm
- Availability: 18 months after FLA

07



## DATA CENTER SITE (100 MW)

- Location: Vienna East
- Area: Up to 80,000 sqm
- Availability: To be determined

08



## LOGISTIC PARK VIE - SOUTH

- Location: Vienna South / Laxenburg
- Area: Up to 16,500 sqm
- Availability: Q4 2024

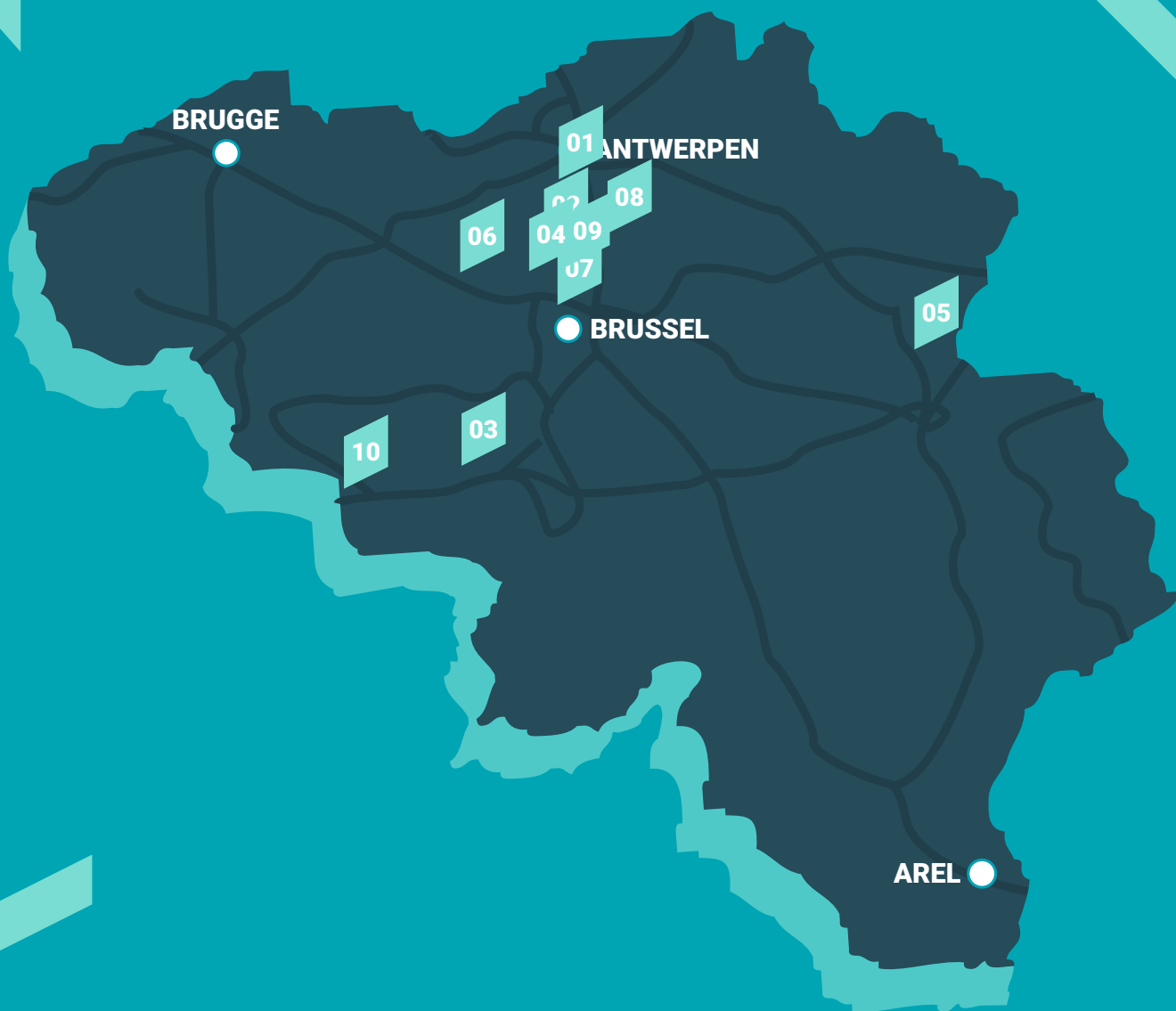
09



## LOGISTIC PARK UPPER AUSTRIA

- Location: Wels/Laakirchen
- Area: Up to 70,000 sqm
- Availability: Q4 2025

# TOP OFFERS BELGIUM



# TOP OFFERS BELGIUM

01



## BLUE GATE ANTWERP

- Location: 2660 Antwerpen
- Area: Up to 80,000 sqm
- Availability: To be determined

02



## MODERN DISTRIBUTION HUB

- Location: 2830 Willebroek
- Area: Up to 40,500 sqm
- Availability: Immediate

03



## DOUR LOGISTICS CENTRE

- Location: 7370 Dour
- Area: Up to 104,000 sqm
- Availability: To be determined

04



## BUILT-TO-SUIT PROJECT

- Location: 2880 Bornem
- Area: Up to 30,000 sqm
- Availability: To be determined

05



## SUSTAINABLE DISTRIBUTION HUB

- Location: 3740 BILZEN
- Area: 30,000 sqm
- Availability: To be determined

06



## MG BIG BEAR

- Location: 9940 EVERGEM
- Area: Up to 180,000 sqm
- Availability: To be determined

07



## LOGISTIC HUB

- Location: 1850 Grimbergen
- Area: Up to 56,000 sqm
- Availability: To be determined

08



## MECHELEN LOGISTICS CENTER

- Location: 2800 Mechelen
- Area: Up to 9,900 sqm
- Availability: Immediate

09



## LOGICOR - KERSDONK

- Location: 2830 TISSELT
- Area: Up to 31,700 sqm
- Availability: Immediate

10

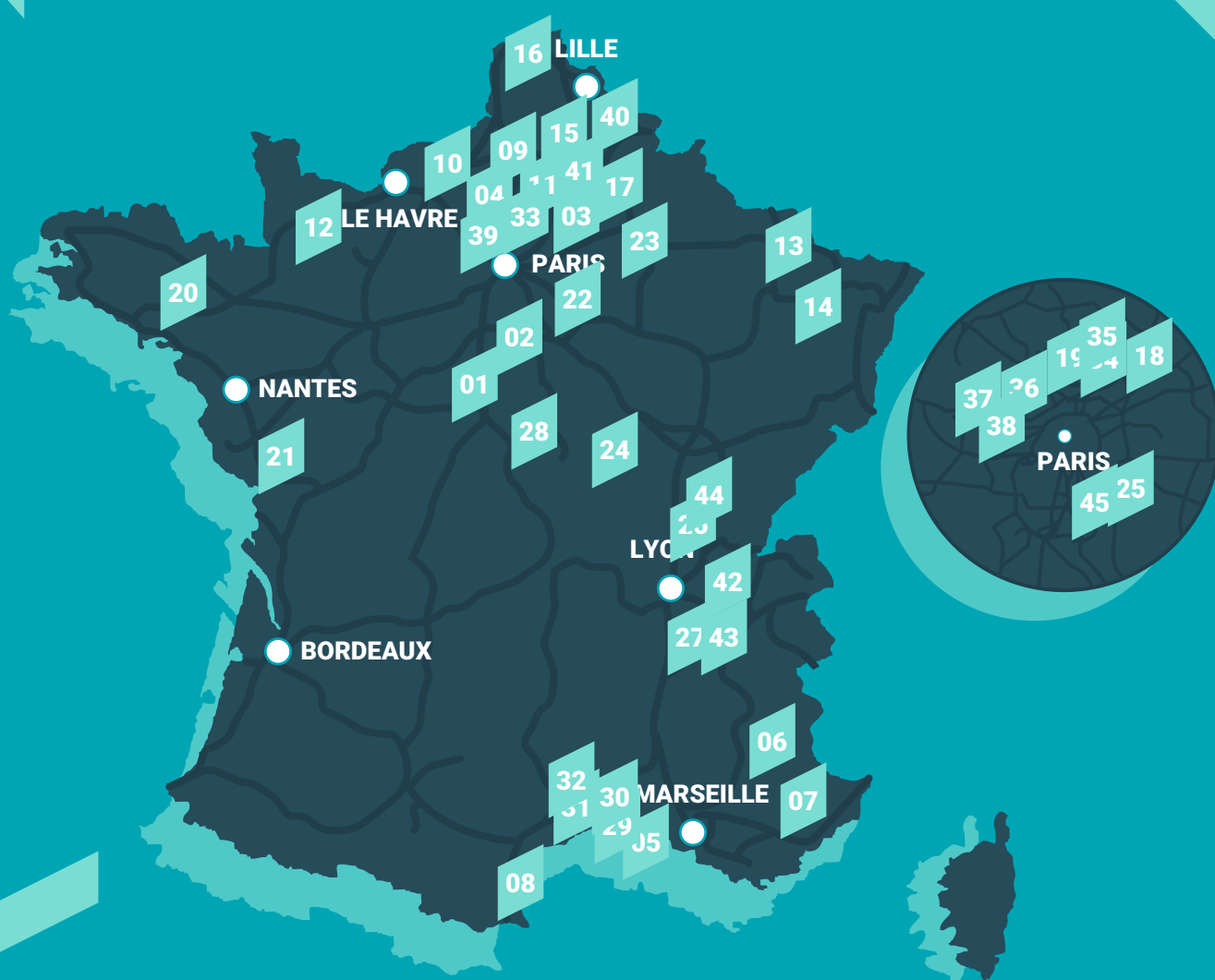


## WAPI LOGISTICS CAMPUS 21

- Location: 7600 PERUWELZ
- Area: Up to 110,000 sqm
- Availability: To be determined

# TOP OFFERS

## FRANCE





# TOP OFFERS FRANCE

01



## DEVELOPMENT

- Location: Meung sur Loire (45)
- Area: 15,931 sqm
- Availability: 9 months after FLA

02



## DEVELOPMENT

- Location: Etrechet (36)
- Area: 112,497 sqm
- Availability: 18 months after FLA

03



## DEVELOPMENT

- Location: Ressons sur matz (60)
- Area: 111,000 sqm
- Availability: 12 months after FLA

04



## EXISTING BUILDING

- Location: Longueil-sainte-marie (60)
- Area: 26,000 sqm
- Availability: Immediate

05



## EXISTING BUILDING

- Location: Saint-Martin-de-Crau (13)
- Area: 30,669 sqm
- Availability: January 2025

06



## DEVELOPMENT

- Location: Montelimar (26)
- Area: 30,323 sqm
- Availability: 12 months after FLA

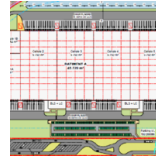
07



## DEVELOPMENT

- Location: Pierrelatte (26)
- Area: 54,278 sqm
- Availability: Q2 2025

08



## DEVELOPMENT

- Location: Port la Nouvelle (11)
- Area: 49,636 sqm
- Availability: 24 months after FLA

09



## DEVELOPMENT

- Location: Allonne (60)
- Area: 44,703 sqm
- Availability: Q1 2024

10



## DEVELOPMENT

- Location: Petit couronne (76)
- Area: 34,000 sqm
- Availability: Q2 2025

11



## EXISTING BUILDING

- Location: Saint-Sauveur (80)
- Area: 30,383 sqm
- Availability: Immediate

12



## DEVELOPMENT

- Location: Moulton (14)
- Area: 26,005 sqm
- Availability: 12 months after FLA

13



## DEVELOPMENT

- Location: Ennery (57)
- Area: 12,000 sqm
- Availability: December 2024

14



## DEVELOPMENT

- Location: Atton (54)
- Area: 31,569 sqm
- Availability: June 2025

15



## DEVELOPMENT

- Location: Cambrai (59)
- Area: 37,608 sqm
- Availability: Immediate

16



## DEVELOPMENT

- Location: Dunkerque (59)
- Area: 86,525 sqm
- Availability: 12 months after FLA

17



## DEVELOPMENT

- Location: Laon (02)
- Area: 97,000 sqm
- Availability: 2026

18



## EXISTING BUILDING

- Location: Saint Mard (77)
- Area: 18,000 sqm
- Availability: Immediate



19

**EXISTING BUILDING**

- Location: Marly-la-ville (95)
- Area: 9,800 sqm
- Availability: Immediate

20

**DEVELOPMENT**

- Location: Plechatel (35)
- Area: 25,760 sqm
- Availability: Q3 2025

21

**DEVELOPMENT**

- Location: Sainte Hermine (85)
- Area: 29,700 sqm
- Availability: Q2 2025

22

**EXISTING BUILDING**

- Location: Chatres (77)
- Area: 11,520 sqm
- Availability: July 2024

23

**EXISTING BUILDING**

- Location: Meaux (77)
- Area: 38,620 sqm
- Availability: Immediate

24

**DEVELOPMENT**

- Location: Avallon (89)
- Area: 77,440 sqm
- Availability: Q1 2025

25

**EXISTING BUILDING**

- Location: Moissy-Cramayel (77)
- Area: 40,850 sqm
- Availability: Immediate

26

**DEVELOPMENT**

- Location: Mionnay (01)
- Area: 30,785 sqm
- Availability: 18 months after FLA

27

**DEVELOPMENT**

- Location: Saint Etienne de Saint Geoirs (38)
- Area: 12,500 sqm
- Availability: 12 months after FLA

28

**DEVELOPMENT**

- Location: Tournay (28)
- Area: 31,720 sqm
- Availability: July 2025

29

**EXISTING BUILDING**

- Location: Port-Saint-Louis-du-Rhône (13)
- Area: 49,933 sqm
- Availability: Immediate

30

**EXISTING BUILDING**

- Location: Saint-Martin-de-Crau (13)
- Area: 70,389 sqm
- Availability: July 2025

31

**DEVELOPMENT**

- Location: Berre l'Etang (13)
- Area: 31,245 sqm
- Availability: To be determined

32

**EXISTING BUILDING**

- Location: Grans (13)
- Area: 25,610 sqm
- Availability: Immediate

33

**EXISTING BUILDING**

- Location: Ablaincourt (80)
- Area: 38,163 sqm
- Availability: Immediate

34

**EXISTING BUILDING**

- Location: Marly-la-Ville (95)
- Area: 32,863 sqm
- Availability: Immediate

35

**EXISTING BUILDING**

- Location: Marly-la-Ville (95)
- Area: 11,841 sqm
- Availability: June 2025

36

**EXISTING BUILDING**

- Location: Gennevilliers (92)
- Area: 20,667 sqm
- Availability: September 2025

37

**EXISTING BUILDING**

- Location: Conflans-Sainte-Honorine (78)
- Area: 10,075 sqm
- Availability: Immediate

39

**DEVELOPMENT**

- Location: Saint-Crepin-Ibouville (60)
- Area: 47,687 sqm
- Availability: Immediate

41

**EXISTING BUILDING**

- Location: Dourges (62)
- Area: 64,566 sqm
- Availability: Q4 2025

43

**EXISTING BUILDING**

- Location: Rives (38)
- Area: 33,966 sqm
- Availability: Immediate

45

**EXISTING BUILDING**

- Location: Tournan-en-Brie (77)
- Area: 62,000 sqm
- Availability: Immediate

38

**EXISTING BUILDING**

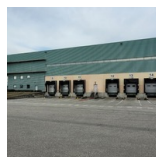
- Location: Herblay-sur-Seine (95)
- Area: 17,499 sqm
- Availability: Immediate

40

**EXISTING BUILDING**

- Location: Hem (59)
- Area: 40,010 sqm
- Availability: Immediate

42

**EXISTING BUILDING**

- Location: Saint-Vulbas (01)
- Area: 21,240 sqm
- Availability: July 2025

44

**EXISTING BUILDING**

- Location: Sevrey (71)
- Area: 22,540 sqm
- Availability: Immediate

# TOP OFFERS NETHERLANDS



01



## ROTTERDAM LOGISTICS PARK - DCA

- Location: Hellevoetsluis
- Area: From 10,000 sqm
- Availability: December 2025

02



## ROTTERDAM LOGISTICS PARK - DCD

- Location: Hellevoetsluis
- Area: Up to 25,000 sqm
- Availability: March 2026

03



## SCHIESQUARE

- Location: Schiedam
- Area: Up to 20,000 sqm
- Availability: March 2027

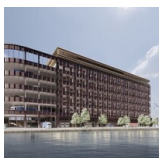
04



## TRALWERWEG

- Location: Vlaardingen
- Area: Up to 11,000 sqm
- Availability: September 2025

05



## ROTTERDAM II LOGISTICS CENTRE

- Location: Rotterdam
- Area: Up to 50,000 sqm
- Availability: January 2027

# TOP OFFERS

## POLAND



# TOP OFFERS POLAND

01



## WAREHOUSE IN GDANSK

- Location: Gdansk, northern Poland
- Area: From 20,000 sqm
- Availability: Q2 2024

02



## WAREHOUSE PARK GDANSK NEAR DCT

- Location: Gdansk, northern Poland
- Area: From 2,730 sqm
- Availability: Q2 2024

03



## WAREHOUSE PARK IN SZCZECIN

- Location: Szczecin, north Poland
- Area: Up to 34,000 sqm
- Availability: Immediate

04



## PROPERTY NEAR POZNAN

- Location: Poznan, western Poland
- Area: 15,600 sqm
- Availability: Immediate

05



## WAREHOUSE POZNAN SOUTH

- Location: Poznan, western Poland
- Area: Up to 40,800 sqm
- Availability: Q4 To be determined

06



## PROPERTY GORZOW WIELKOPOLSKI

- Location: Gorzow Wielkopolski
- Area: From 12,000 sqm
- Availability: Immediate

07



## WAREHOUSE IN WROCLAW

- Location: Wroclaw, western Poland
- Area: Up to 61,000 sqm
- Availability: 12 months after FLA

08



## WAREHOUSE IN ZGORZELEC

- Location: Zgorzelec, western Poland, at the Polish-German border
- Area: Up to 217,000 sqm
- Availability: To be determined

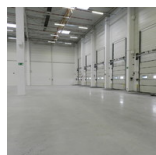
09



## CITY PARK LODZ WEST

- Location: Lodz, central Poland
- Area: Up to 72,000 sqm
- Availability: Immediate

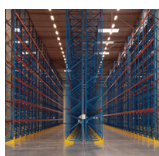
10



## WAREHOUSE IN LODZ

- Location: Lodz, central Poland, close to A1 Highway
- Area: Up to 27,000 sqm
- Availability: Q4 2024

11



## WAREHOUSE NEAR LODZ II

- Location: Lodz
- Area: 17,000 sqm
- Availability: 6 months after FLA

12



## PROPERTY IN RZGOW

- Location: Rzgów, near Łódź, central Poland
- Area: 8,100 sqm
- Availability: Immediate

13



## WAREHOUSE PARK RAWA MAZOWIECKA

- Location: Rawa Mazowiecka, central Poland
- Area: Up to 48,300 sqm
- Availability: Immediate

14



## PROPERTY WARSAW WEST I

- Location: Warsaw
- Area: Up to 61,000 sqm
- Availability: Immediate

15



## WAREHOUSE PARK WARSAW NORTH

- Location: North of Warsaw, Poland
- Area: 61,000 sqm
- Availability: Immediate

16



## WAREHOUSE CITY PARK WARSAW

- Location: Warsaw, Poland
- Area: From 1,500 sqm
- Availability: Q2 2024

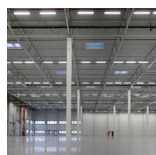
17



## WAREHOUSE AIRPORT WARSAW

- Location: Warsaw, Poland
- Area: Up to 40,000 sqm
- Availability: April 2025

18



## CITY PARK KATOWICE

- Location: Katowice, southern Poland
- Area: Up to 61,000 sqm
- Availability: To be determined

19



#### **WAREHOUSE NEAR KATOWICE I**

- Location: Ruda Śląska, southern Poland
- Area: Up to 53,000 sqm
- Availability: To be determined

20



#### **WAREHOUSE NEAR KATOWICE II**

- Location: Gliwice, southern Poland
- Area: Up to 41,400 sqm
- Availability: To be determined

21



#### **HALL IN KRAKOW**

- Location: Krakow, southern Poland
- Area: 21,000 sqm
- Availability: Immediate

22



#### **WAREHOUSE PARK RZESZOW**

- Location: Rzeszow, south-eastern Poland
- Area: Up to 46,000 sqm
- Availability: Q3 2024

# TOP OFFERS

## SPAIN





# TOP OFFERS SPAIN

01



## CONSTANTÍ - WAREHOUSE

- Location: Constantí (Tarragona)
- Area: 20,000 sqm
- Availability: Immediate

02



## GELIDA - WAREHOUSE

- Location: Gelida (Barcelona)
- Area: 19,566 sqm
- Availability: Immediate

03



## PUERTA BARCELONA - WAREHOUSE

- Location: Hospitalet de Llobregat (Barcelona)
- Area: From 2,900 sqm
- Availability: Immediate

04



## PALAU DE PLEGAMANS - WAREHOUSE

- Location: Palau solita i Plegamans (Barcelona)
- Area: 71,980 sqm
- Availability: To be determined

05



## PROYECTO DELTA 21

- Location: Illescas
- Area: Up to 15,156 sqm
- Availability: Q3 2025

06



## MIRANDA - LOGISTIC PLATFORM

- Location: Miranda de Ebro (Burgos)
- Area: 128,384 sqm
- Availability: Immediate

07



## AZUQUECA - WAREHOUSE

- Location: Azuqueca de Henares (Guadalajara)
- Area: 36,374 sqm
- Availability: Immediate

08



## LLAVE EN MANO ONTÍGOLA

- Location: Ontígola
- Area: Up to 86,000 sqm
- Availability: 2025

09



## PTL NOBLEJAS

- Location: Noblejas, Toledo
- Area: From 5,000 sqm
- Availability: Immediate

10



## PTL NOBLEJAS LLAVE EN MANO

- Location: Noblejas
- Area: From 3,000 sqm
- Availability: Immediate

11



## PLOT OF ILLESCAS

- Location: Illescas
- Area: 4,394 sqm
- Availability: Immediate

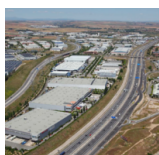
12



## WAREHOUSE - MEJORADA DEL CAMPO

- Location: Mejorada del Campo
- Area: Up to 19,337 sqm
- Availability: Immediate

13



## LA GARENA PARK

- Location: ALCALÁ DE HENARES
- Area: Up to 10,623 sqm
- Availability: Q1 2025

14



## LOGISTICS PLATFORM AND DELIVER

- Location: Alcalá de Henares
- Area: Up to 19,940 sqm
- Availability: Q2 2025

15



## VALLS - WAREHOUSE

- Location: Valls (Tarragona)
- Area: Up to 30,000 sqm
- Availability: Immediate

16



## MANRESA - LOGISTIC HUB

- Location: Rajadell (Barcelona)
- Area: Up to 50,000 sqm
- Availability: Q4 2025

17



## SEGRO PARK COSLADA IV

- Location: Coslada
- Area: Up to 11,200 sqm
- Availability: Q2 2026

18



## SEGRO PARK COSLADA V

- Location: Coslada
- Area: Up to 14,500 sqm
- Availability: Q4 2026

19



#### ZANDA

- Location: Vicálvaro
  - Area: Up to 654 sqm
  - Availability: Q3 2026
- 

20



#### ACTIUM MILE

- Location: Vicálvaro
  - Area: Up to 2,400 sqm
  - Availability: Q4 2026
- 

21



#### DC1

- Location: San Agustín de Guadalix
  - Area: Up to 15,000 sqm
  - Availability: Immediate
-

# TOP OFFERS

## UNITED KINGDOM



# TOP OFFERS UNITED KINGDOM

01



## SYMMETRY PARK DARLINGTON

- Location: Darlington
- Area: Up to 139,000 sqm
- Availability: 2024

02



## THAMES VALLEY

- Location: Thames Valley
- Area: Up to 74,000 sqm
- Availability: 2026

03



## RUGBY, MIDLANDS

- Location: Rugby
- Area: Up to 5,000 sqm
- Availability: 2024

04



## H PARK

- Location: Manchester
- Area: Up to 32,518 sqm
- Availability: 2024

05



## TUNGSTEN PARK

- Location: Witney
- Area: Up to 25,000 sqm
- Availability: 2024

06



## WARRINGTON

- Location: Warrington
- Area: Up to 200,000 sqm
- Availability: 2030

07



## THRAPSTON

- Location: Thrapston
- Area: Up to 1,000,000 sqm
- Availability: 2025

08



## HAWKE RIDGE BUSINESS PARK

- Location: Westbury
- Area: Up to 46,452 sqm
- Availability: 2024

09



## LAND AT, EUROWAY PARK B69

- Location: Oldbury
- Area: 23,068 sqm
- Availability: 2024

10



## NOVA OXFORD

- Location: Oxford
- Area: Up to 4,064 sqm
- Availability: Q1 2024

11



## ST PETER'S ROAD, HUNTINGDON

- Location: Cambridgeshire
- Area: Up to 5,110 sqm
- Availability: 2024

12



## FENTON WAY, CHATTERIS

- Location: Cambridgeshire
- Area: Up to 31,258 sqm
- Availability: Q2 2024

13



## LINK PARK

- Location: Heathrow, West London
- Area: Up to 8,573 sqm
- Availability: 2024

14



## LAND AT CARRINGTON

- Location: Manchester
- Area: Up to 131,523 sqm
- Availability: 2024

15



## PURFLEET TRADE PARC

- Location: Purfleet
- Area: Up to 2,476 sqm
- Availability: 2024

16



## NOVIO

- Location: Chichester
- Area: Up to 3,471 sqm
- Availability: Q2 2025

# CONTACT

## LOGISTICS REAL ESTATE PARTNER

---



**Jean-François MOUNIC**

Director

✉ [jfmounic@irels.net](mailto:jfmounic@irels.net)

## A MEMBER OF IRELS

---



Carter Jonas



