



INTERNATIONAL REAL ESTATE LOGISTICS SOLUTIONS

**YOUR GATEWAY
TO LOGISTICS PROPERTY**

**TOP OFFERS
ACROSS EUROPE**



Carter Jonas





INTERNATIONAL REAL ESTATE LOGISTICS SOLUTIONS

INTERNATIONAL REAL ESTATE LOGISTICS SOLUTIONS

IRELS is the only international network of independent professionals specialising in the logistics real estate sector in Europe. The best assets of our network: the human factor, short decision-making circuits, case follow-up by the same person and the mobility of our teams, providing quality, flexibility and a quick response time.

We serve our clients with 1,070 experts in 42 offices through the network, covering 5,500 buildings available. Our members concluded deals of 13 millions sqm in the last 10 years. Based on these, our Single Points of Contact (SPOC) provide tailor-made real estate logistics solutions in :

- ▀ **Strategic consulting,**
- ▀ **Finding logistics buildings available for sale or rent, and**
- ▀ **Project Management.**

Our ambition with this network is to support our clients with their international development.

This network solely consists of independent companies and leaders in their respective countries coming together for a common project: to offer tailor-made real estate solutions based on local expertise and benefiting from an optimal knowledge of the market and its evolution.

Our values :

- F - FLEXIBILITY**
- A - ANTICIPATION, AGILITY**
- S - SPEED & SHORT DECISION PROCESS**
- T - TRANSPARENCY**

We aim to be the standard in terms of quality and responsiveness in the logistics real estate market, at the European level first and foremost.



TOP OFFERS

AUSTRIA



TOP OFFERS AUSTRIA

01



CITY PARK VIENNA

- Location: Vienna South
- Area: From 1,500 sqm
- Availability: Q4 2024

02



SQUAREBIZZ PARK

- Location: Grossebersdorf / Vienna North
- Area: Up to 10 sqm
- Availability: Immediate

03



LOGISTIC PARK VIENNA SOUTHEAST

- Location: Kottingbrunn
- Area: Up to 35,000 sqm
- Availability: Q2 2024

04



BUSINESSPARK LEBRING

- Location: Graz / Lebring
- Area: From 2,500 sqm
- Availability: Q3 2025

05



LOGISTIC CENTER VILLACH

- Location: Villach / Fürnitz
- Area: Up to 32,000 sqm
- Availability: Q3 2025

06



TIROL CENTER KEMATEN

- Location: Kematen in Tirol
- Area: 64,000 sqm
- Availability: 18 months after FLA

07



DATA CENTER SITE (100 MW)

- Location: Vienna East
- Area: Up to 80,000 sqm
- Availability: To be determined

08



LOGISTIC PARK VIE - SOUTH

- Location: Vienna South / Laxenburg
- Area: Up to 16,500 sqm
- Availability: Q4 2024

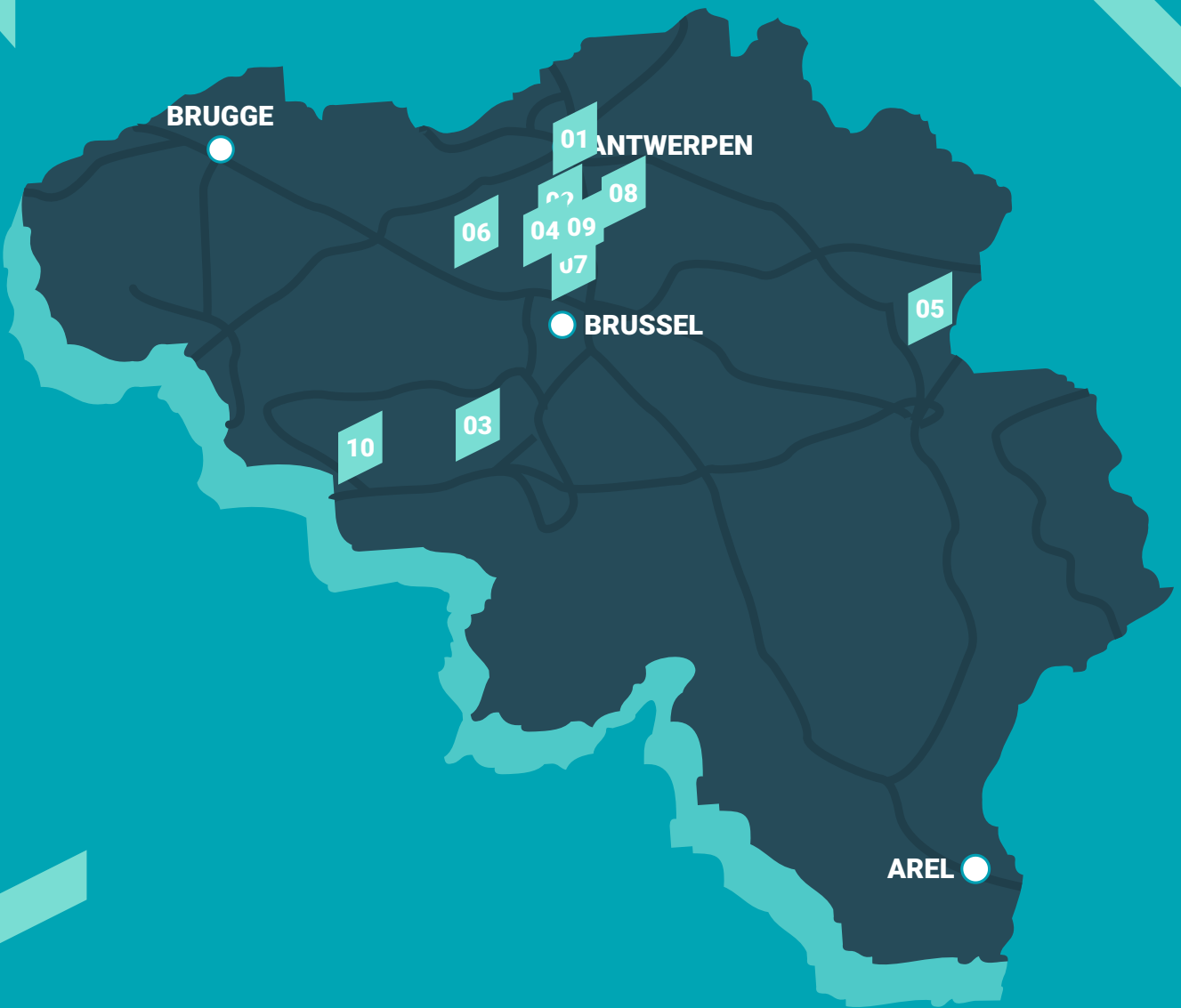
09



LOGISTIC PARK UPPER AUSTRIA

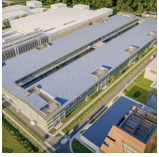
- Location: Wels/Laakirchen
- Area: Up to 70,000 sqm
- Availability: Q4 2025

TOP OFFERS BELGIUM



TOP OFFERS BELGIUM

01



BLUE GATE ANTWERP

- Location: 2660 Antwerpen
- Area: Up to 80,000 sqm
- Availability: To be determined

02



MODERN DISTRIBUTION HUB

- Location: 2830 Willebroek
- Area: Up to 40,500 sqm
- Availability: Immediate

03



DOUR LOGISTICS CENTRE

- Location: 7370 Dour
- Area: Up to 104,000 sqm
- Availability: To be determined

04



BUILT-TO-SUIT PROJECT

- Location: 2880 Bornem
- Area: Up to 30,000 sqm
- Availability: To be determined

05



SUSTAINABLE DISTRIBUTION HUB

- Location: 3740 BILZEN
- Area: 30,000 sqm
- Availability: To be determined

06



MG BIG BEAR

- Location: 9940 EVERGEM
- Area: Up to 180,000 sqm
- Availability: To be determined

07



LOGISTIC HUB

- Location: 1850 Grimbergen
- Area: Up to 56,000 sqm
- Availability: To be determined

08



MECHELEN LOGISTICS CENTER

- Location: 2800 Mechelen
- Area: Up to 9,900 sqm
- Availability: Immediate

09



LOGICOR - KERSDONK

- Location: 2830 TISSELT
- Area: Up to 31,700 sqm
- Availability: Immediate

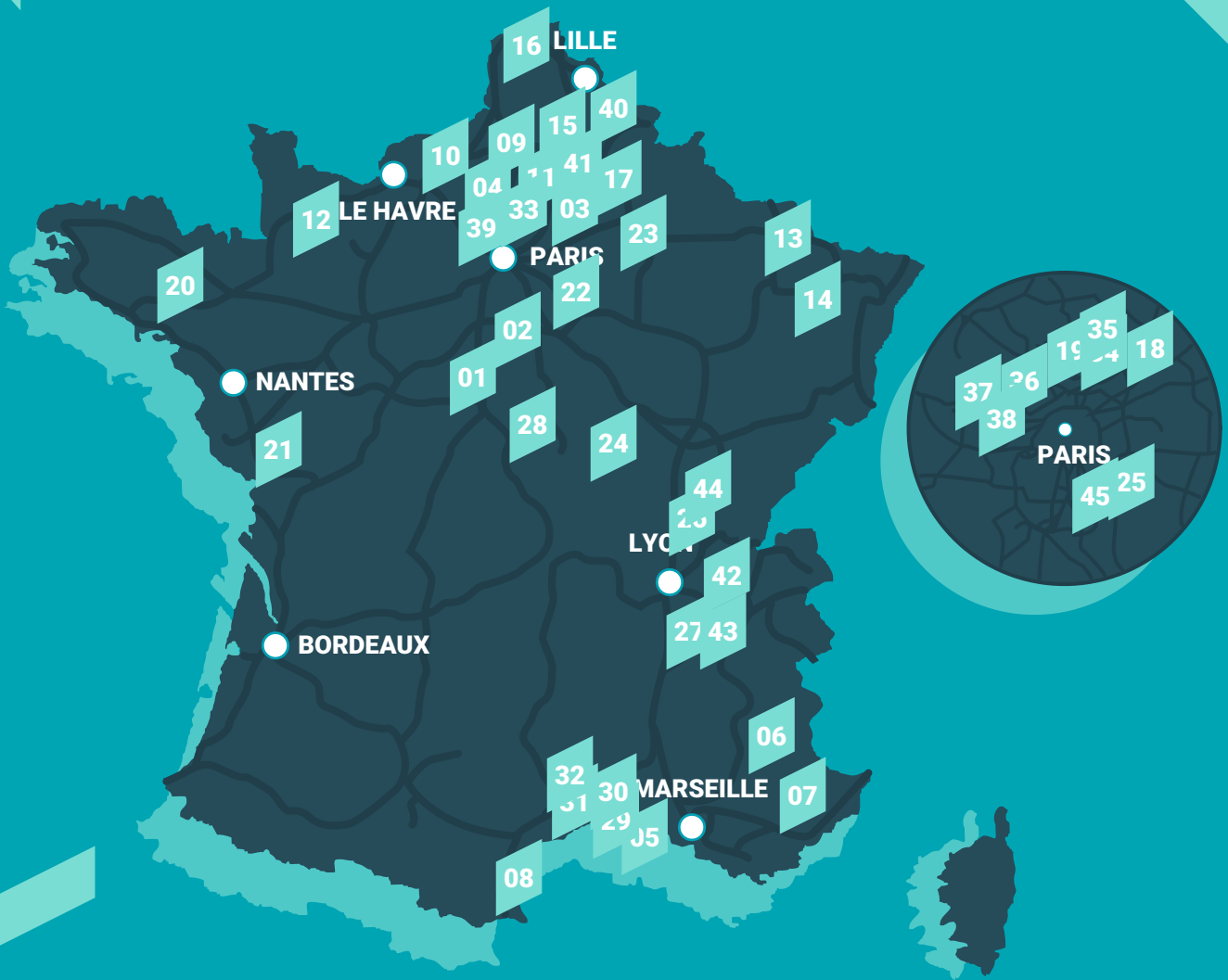
10



WAPI LOGISTICS CAMPUS 21

- Location: 7600 PERUWELZ
- Area: Up to 110,000 sqm
- Availability: To be determined

TOP OFFERS FRANCE



TOP OFFERS FRANCE

01



DEVELOPMENT

- Location: Meung sur Loire (45)
- Area: 15,931 sqm
- Availability: 9 months after FLA

02



DEVELOPMENT

- Location: Etrechet (36)
- Area: 112,497 sqm
- Availability: 18 months after FLA

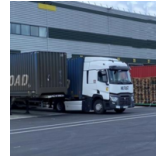
03



DEVELOPMENT

- Location: Reissons sur matz (60)
- Area: 111,000 sqm
- Availability: 12 months after FLA

04



EXISTING BUILDING

- Location: Longueil-sainte-marie (60)
- Area: 26,000 sqm
- Availability: Immediate

05



EXISTING BUILDING

- Location: Saint-Martin-de-Crau (13)
- Area: 30,669 sqm
- Availability: January 2025

06



DEVELOPMENT

- Location: Montelimar (26)
- Area: 30,323 sqm
- Availability: 12 months after FLA

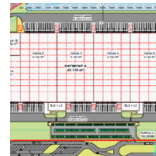
07



DEVELOPMENT

- Location: Pierrelatte (26)
- Area: 54,278 sqm
- Availability: Q2 2025

08



DEVELOPMENT

- Location: Port la Nouvelle (11)
- Area: 49,636 sqm
- Availability: 24 months after FLA

09



DEVELOPMENT

- Location: Allonne (60)
- Area: 44,703 sqm
- Availability: Q1 2024

10



DEVELOPMENT

- Location: Petit couronne (76)
- Area: 34,000 sqm
- Availability: Q2 2025

11



EXISTING BUILDING

- Location: Saint-Sauveur (80)
- Area: 30,383 sqm
- Availability: Immediate

12



DEVELOPMENT

- Location: Moulit (14)
- Area: 26,005 sqm
- Availability: 12 months after FLA

13



DEVELOPMENT

- Location: Ennery (57)
- Area: 12,000 sqm
- Availability: December 2024

14



DEVELOPMENT

- Location: Atton (54)
- Area: 31,569 sqm
- Availability: June 2025

15



DEVELOPMENT

- Location: Cambrai (59)
- Area: 37,608 sqm
- Availability: Immediate

16



DEVELOPMENT

- Location: Dunkerque (59)
- Area: 86,525 sqm
- Availability: 12 months after FLA

17



DEVELOPMENT

- Location: Laon (02)
- Area: 97,000 sqm
- Availability: 2026

18



EXISTING BUILDING

- Location: Saint Mard (77)
- Area: 18,000 sqm
- Availability: Immediate

19



EXISTING BUILDING

- Location: Marly-la-ville (95)
- Area: 9,800 sqm
- Availability: Immediate

21



DEVELOPMENT

- Location: Sainte Hermine (85)
- Area: 29,700 sqm
- Availability: Q2 2025

23



EXISTING BUILDING

- Location: Meaux (77)
- Area: 38,620 sqm
- Availability: Immediate

25



EXISTING BUILDING

- Location: Moissy-Cramayel (77)
- Area: 40,850 sqm
- Availability: Immediate

27



DEVELOPMENT

- Location: Saint Etienne de Saint Geoirs (38)
- Area: 12,500 sqm
- Availability: 12 months after FLA

29



EXISTING BUILDING

- Location: Port-Saint-Louis-du-Rhône (13)
- Area: 49,933 sqm
- Availability: Immediate

31



DEVELOPMENT

- Location: Berre l'Etang (13)
- Area: 31,245 sqm
- Availability: To be determined

33



EXISTING BUILDING

- Location: Ablaincourt (80)
- Area: 38,163 sqm
- Availability: Immediate

35



EXISTING BUILDING

- Location: Marly-la-Ville (95)
- Area: 11,841 sqm
- Availability: June 2025

20



DEVELOPMENT

- Location: Plechatel (35)
- Area: 25,760 sqm
- Availability: Q3 2025

22



EXISTING BUILDING

- Location: Chartres (77)
- Area: 11,520 sqm
- Availability: July 2024

24



DEVELOPMENT

- Location: Avallon (89)
- Area: 77,440 sqm
- Availability: Q1 2025

26



DEVELOPMENT

- Location: Mionnay (01)
- Area: 30,785 sqm
- Availability: 18 months after FLA

28



DEVELOPMENT

- Location: Tournay (28)
- Area: 31,720 sqm
- Availability: July 2025

30



EXISTING BUILDING

- Location: Saint-Martin-de-Crau (13)
- Area: 70,389 sqm
- Availability: July 2025

32



EXISTING BUILDING

- Location: Grans (13)
- Area: 25,610 sqm
- Availability: Immediate

34



EXISTING BUILDING

- Location: Marly-la-Ville (95)
- Area: 32,863 sqm
- Availability: Immediate

36



EXISTING BUILDING

- Location: Gennevilliers (92)
- Area: 20,667 sqm
- Availability: September 2025

37



EXISTING BUILDING

- Location: Conflans-Sainte-Honorine (78)
- Area: 10,075 sqm
- Availability: Immediate

38



EXISTING BUILDING

- Location: Herblay-sur-Seine (95)
- Area: 17,499 sqm
- Availability: Immediate

39



DEVELOPMENT

- Location: Saint-Crepin-Ibouvillers (60)
- Area: 47,687 sqm
- Availability: Immediate

40



EXISTING BUILDING

- Location: Hem (59)
- Area: 40,010 sqm
- Availability: Immediate

41



EXISTING BUILDING

- Location: Dourges (62)
- Area: 64,566 sqm
- Availability: Q4 2025

42



EXISTING BUILDING

- Location: Saint-Vulbas (01)
- Area: 21,240 sqm
- Availability: July 2025

43



EXISTING BUILDING

- Location: Rives (38)
- Area: 33,966 sqm
- Availability: Immediate

44



EXISTING BUILDING

- Location: Sevrey (71)
- Area: 22,540 sqm
- Availability: Immediate

45



EXISTING BUILDING

- Location: Tournan-en-Brie (77)
- Area: 62,000 sqm
- Availability: Immediate

TOP OFFERS NETHERLANDS



01



ROTTERDAM LOGISTICS PARK - DCA

- Location: Hellevoetsluis
- Area: From 10,000 sqm
- Availability: December 2025

02



ROTTERDAM LOGISTICS PARK - DCD

- Location: Hellevoetsluis
- Area: Up to 25,000 sqm
- Availability: March 2026

03



SCHIESQUARE

- Location: Schiedam
- Area: Up to 20,000 sqm
- Availability: March 2027

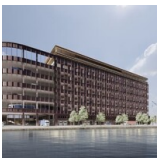
04



TRALWERWEG

- Location: Vlaardingen
- Area: Up to 11,000 sqm
- Availability: September 2025

05



ROTTERDAM II LOGISTICS CENTRE

- Location: Rotterdam
- Area: Up to 50,000 sqm
- Availability: January 2027

TOP OFFERS

POLAND



TOP OFFERS POLAND

01



WAREHOUSE IN GDANSK

- Location: Gdansk, northern Poland
- Area: From 20,000 sqm
- Availability: Q2 2024

02



WAREHOUSE PARK GDANSK NEAR DCT

- Location: Gdansk, northern Poland
- Area: From 2,730 sqm
- Availability: Q2 2024

03



WAREHOUSE PARK IN SZCZECIN

- Location: Szczecin, north Poland
- Area: Up to 34,000 sqm
- Availability: Immediate

04



PROPERTY NEAR POZNAN

- Location: Poznan, western Poland
- Area: 15,600 sqm
- Availability: Immediate

05



WAREHOUSE POZNAN SOUTH

- Location: Poznan, western Poland
- Area: Up to 40,800 sqm
- Availability: Q4 To be determined

06



PROPERTY GORZOW WIELKOPOLSKI

- Location: Gorzow Wielkopolski
- Area: From 12,000 sqm
- Availability: Immediate

07



WAREHOUSE IN WROCLAW

- Location: Wroclaw, western Poland
- Area: Up to 61,000 sqm
- Availability: 12 months after FLA

08



WAREHOUSE IN ZGORZELEC

- Location: Zgorzelec, western Poland, at the Polish-German border
- Area: Up to 217,000 sqm
- Availability: To be determined

09



CITY PARK LODZ WEST

- Location: Lodz, central Poland
- Area: Up to 72,000 sqm
- Availability: Immediate

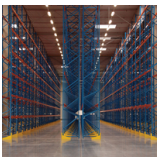
10



WAREHOUSE IN LODZ

- Location: Lodz, central Poland, close to A1 Highway
- Area: Up to 27,000 sqm
- Availability: Q4 2024

11



WAREHOUSE NEAR LODZ II

- Location: Lodz
- Area: 17,000 sqm
- Availability: 6 months after FLA

12



PROPERTY IN RZGOW

- Location: Rzgów, near Łódź, central Poland
- Area: 8,100 sqm
- Availability: Immediate

13



WAREHOUSE PARK RAWA MAZOWIECKA

- Location: Rawa Mazowiecka, central Poland
- Area: Up to 48,300 sqm
- Availability: Immediate

14



PROPERTY WARSAW WEST I

- Location: Warsaw
- Area: Up to 61,000 sqm
- Availability: Immediate

15



WAREHOUSE PARK WARSAW NORTH

- Location: North of Warsaw, Poland
- Area: 61,000 sqm
- Availability: Immediate

16



WAREHOUSE CITY PARK WARSAW

- Location: Warsaw, Poland
- Area: From 1,500 sqm
- Availability: Q2 2024

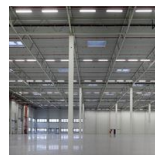
17



WAREHOUSE AIRPORT WARSAW

- Location: Warsaw, Poland
- Area: Up to 40,000 sqm
- Availability: April 2025

18



CITY PARK KATOWICE

- Location: Katowice, southern Poland
- Area: Up to 61,000 sqm
- Availability: To be determined

19



WAREHOUSE NEAR KATOWICE I

- Location: Ruda Śląska, southern Poland
 - Area: Up to 53,000 sqm
 - Availability: To be determined
-

20



WAREHOUSE NEAR KATOWICE II

- Location: Gliwice, southern Poland
 - Area: Up to 41,400 sqm
 - Availability: To be determined
-

21



HALL IN KRAKOW

- Location: Krakow, southern Poland
 - Area: 21,000 sqm
 - Availability: Immediate
-

22



WAREHOUSE PARK RZESZOW

- Location: Rzeszow, south-eastern Poland
 - Area: Up to 46,000 sqm
 - Availability: Q3 2024
-

TOP OFFERS SPAIN



TOP OFFERS SPAIN

01



CONSTANTI - WAREHOUSE

- Location: Constantí (Tarragona)
- Area: 20,000 sqm
- Availability: Immediate

02



GELIDA - WAREHOUSE

- Location: Gelida (Barcelona)
- Area: 19,566 sqm
- Availability: Immediate

03



PUERTA BARCELONA - WAREHOUSE

- Location: Hospitalet de Llobregat (Barcelona)
- Area: From 2,900 sqm
- Availability: Immediate

04



PALAU DE PLEGAMANS - WAREHOUSE

- Location: Palau solita i Plegamans (Barcelona)
- Area: 71,980 sqm
- Availability: To be determined

05



PROYECTO DELTA 21

- Location: Illescas
- Area: Up to 15,156 sqm
- Availability: Q3 2025

06



MIRANDA - LOGISTIC PLATFORM

- Location: Miranda de Ebro (Burgos)
- Area: 128,384 sqm
- Availability: Immediate

07



AZUQUECA - WAREHOUSE

- Location: Azuqueca de Henares (Guadalajara)
- Area: 36,374 sqm
- Availability: Immediate

08



LLAVE EN MANO ONTÍGOLA

- Location: Ontígola
- Area: Up to 86,000 sqm
- Availability: 2025

09



PTL NOBLEJAS

- Location: Noblejas, Toledo
- Area: From 5,000 sqm
- Availability: Immediate

10



PTL NOBLEJAS LLAVE EN MANO

- Location: Noblejas
- Area: From 3,000 sqm
- Availability: Immediate

11



PLOT OF ILLESCAS

- Location: Illescas
- Area: 4,394 sqm
- Availability: Immediate

12



WAREHOUSE - MEJORADA DEL CAMPO

- Location: Mejorada del Campo
- Area: Up to 19,337 sqm
- Availability: Immediate

13



LA GARENA PARK

- Location: ALCALÁ DE HENARES
- Area: Up to 10,623 sqm
- Availability: Q1 2025

14



LOGISTICS PLATFORM AND DELIVER

- Location: Alcalá de Henares
- Area: Up to 19,940 sqm
- Availability: Q2 2025

15



VALLS - WAREHOUSE

- Location: Valls (Tarragona)
- Area: Up to 30,000 sqm
- Availability: Immediate

16



MANRESA - LOGISTIC HUB

- Location: Rajadell (Barcelona)
- Area: Up to 50,000 sqm
- Availability: Q4 2025

TOP OFFERS UNITED KINGDOM



TOP OFFERS UNITED KINGDOM

01



SYMMETRY PARK DARLINGTON

- Location: Darlington
- Area: Up to 139,000 sqm
- Availability: 2024

02



THAMES VALLEY

- Location: Thames Valley
- Area: Up to 74,000 sqm
- Availability: 2026

03



RUGBY, MIDLANDS

- Location: Rugby
- Area: Up to 5,000 sqm
- Availability: 2024

04



H PARK

- Location: Manchester
- Area: Up to 32,518 sqm
- Availability: 2024

05



TUNGSTEN PARK

- Location: Witney
- Area: Up to 25,000 sqm
- Availability: 2024

06



WARRINGTON

- Location: Warrington
- Area: Up to 200,000 sqm
- Availability: 2030

07



THRAPSTON

- Location: Thrapston
- Area: Up to 1,000,000 sqm
- Availability: 2025

08



HAWKE RIDGE BUSINESS PARK

- Location: Westbury
- Area: Up to 46,452 sqm
- Availability: 2024

09



LAND AT, EUROWAY PARK B69

- Location: Oldbury
- Area: 23,068 sqm
- Availability: 2024

10



NOVA OXFORD

- Location: Oxford
- Area: Up to 4,064 sqm
- Availability: Q1 2024

11



ST PETER'S ROAD, HUNTINGDON

- Location: Cambridgeshire
- Area: Up to 5,110 sqm
- Availability: 2024

12



FENTON WAY, CHATTERIS

- Location: Cambridgeshire
- Area: Up to 31,258 sqm
- Availability: Q2 2024

13



LINK PARK

- Location: Heathrow, West London
- Area: Up to 8,573 sqm
- Availability: 2024

14



LAND AT CARRINGTON

- Location: Manchester
- Area: Up to 131,523 sqm
- Availability: 2024

15



PURFLEET TRADE PARC

- Location: Purfleet
- Area: Up to 2,476 sqm
- Availability: 2024

16



NOVIO

- Location: Chichester
- Area: Up to 3,471 sqm
- Availability: Q2 2025

CONTACT

LOGISTICS REAL ESTATE PARTNER



Jean-François MOUNIC

Director

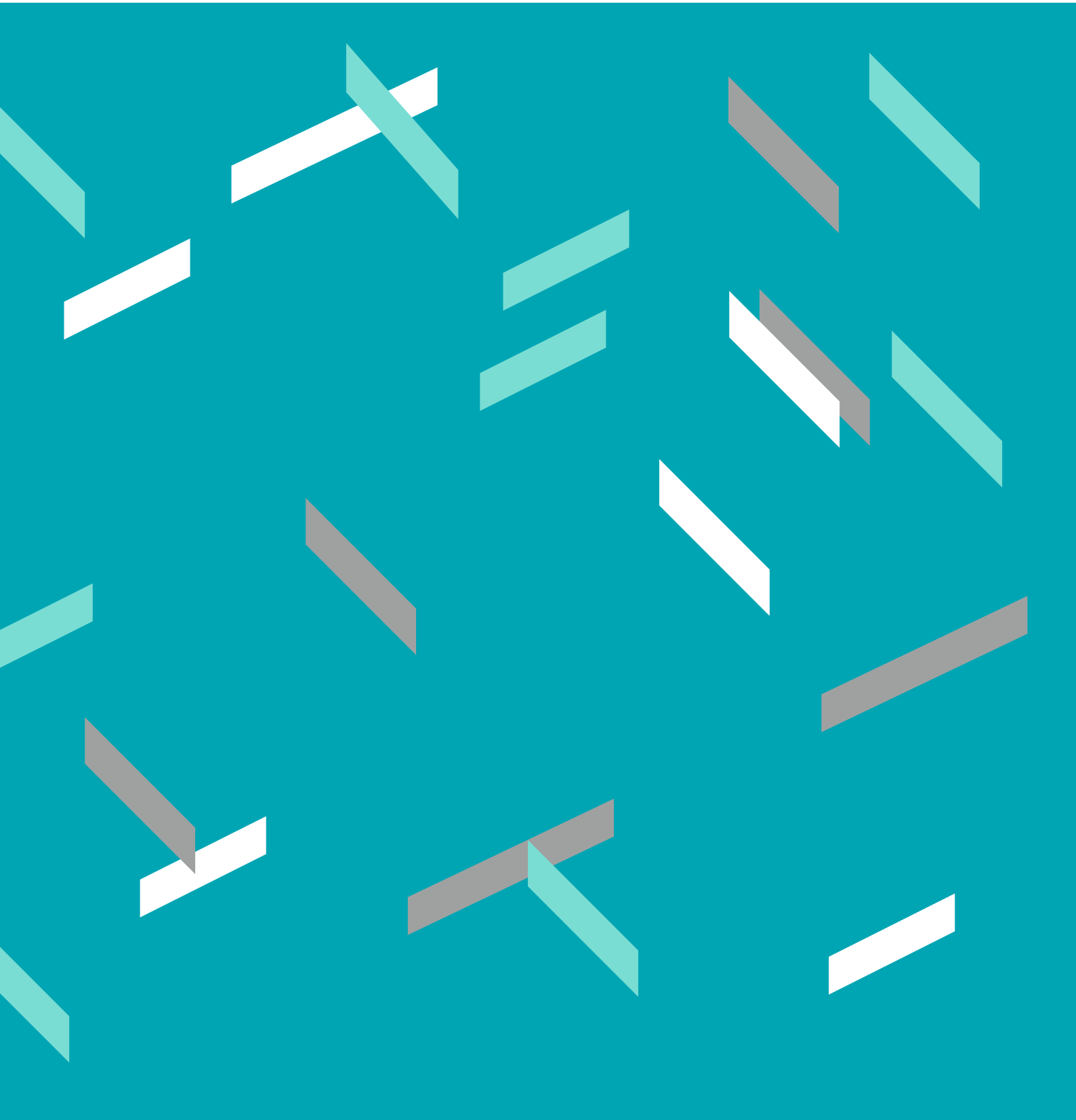
 jfmounic@irels.net

A MEMBER OF IRELS



Carter Jonas





IRELS

10 quai de Bercy, 94220 CHARENTON LE PONT

P : +33 (0)1 41 79 77 77

www.irels.net